



Need help?

In order to request assistance of a social worker you may :

 *Speak to the administration of your child's school or to a staff member*

 *Go in person to your neighborhood*

CLSC

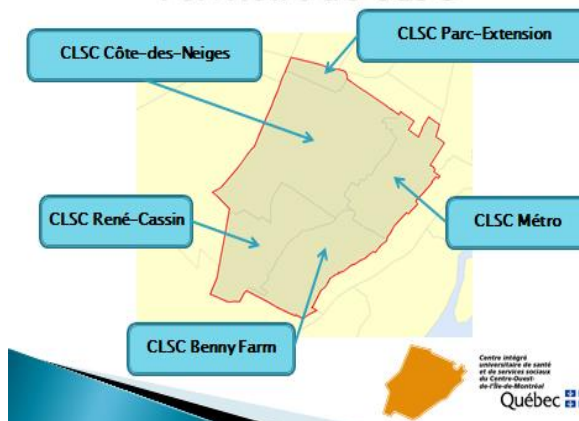
Name : _____

Phone : _____



CLSC Territory

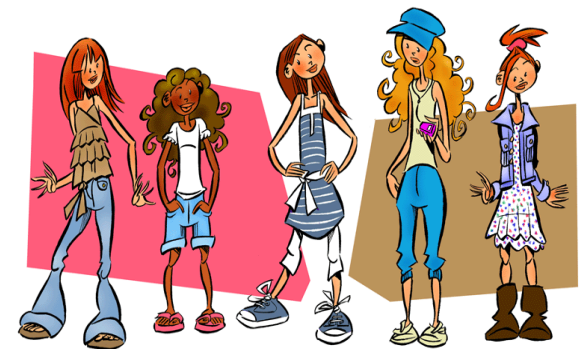
Territoire de CLSC



Healthy Schools Program



School Social Worker



SERVICE OFFERED

Our **Social Worker** provides prevention services and intervenes with children who are experiencing psychosocial, adaptation or integration problems by:

- Offering classroom sessions to nurture children's emotional and social development;
- Providing individual and family counselling;
- Referring these children and their families to appropriate resources;
- Providing group interventions to children in order to respond to particular issues;
- Acting as a consultant to school staff



HERE ARE SOME EXAMPLES:

Personal issues

- ✓ *Negative self image*
- ✓ *Dependency*
- ✓ *Sexual identity issues*
- ✓ *Difficulties adapting to school*
- ✓ *Anxiety*
- ✓ *Bullying or violence*



Family issues

- ✓ *Financial*
- ✓ *Parenting*
- ✓ *Parental authority*
- ✓ *Immigration*
- ✓ *Separation & Divorce*
- ✓ *Adaptation /behavioural problems*
- ✓ *Neglect*
- ✓ *Supporting parents in fostering their child's academic success*



School issues

- ✚ *absenteeism*
- ✚ *motivation*
- ✚ *Teacher/student/family relations*



Social issues

- ✚ *Discrimination*
- ✚ *Peer Pressures*
- ✚ *Conflict, violence*
- ✚ *Social isolation*